

# Airport Parkway Widening

Walkley Road Phase 1

Walkley Roundabout to Walkley LRT Station

Riverside Park Community Association Update

May 13, 2026

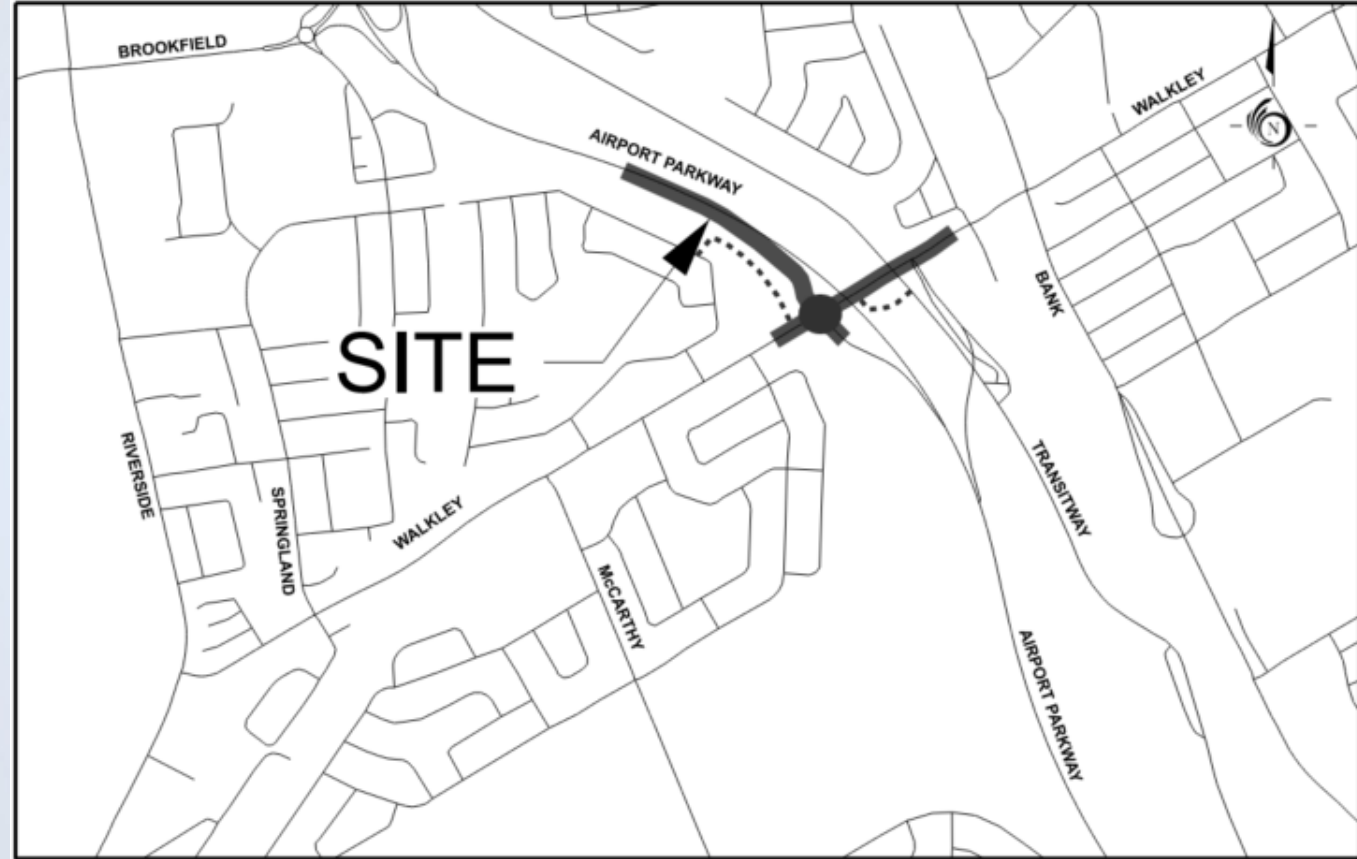
# Agenda

1. Project Overview
2. Project Background & Bill 60 Impacts
3. Proposed Walkley Roundabout Design
4. Construction Staging
5. Next Steps and Timing
6. Questions and Comments

# 1. Project Overview

# Project Overview

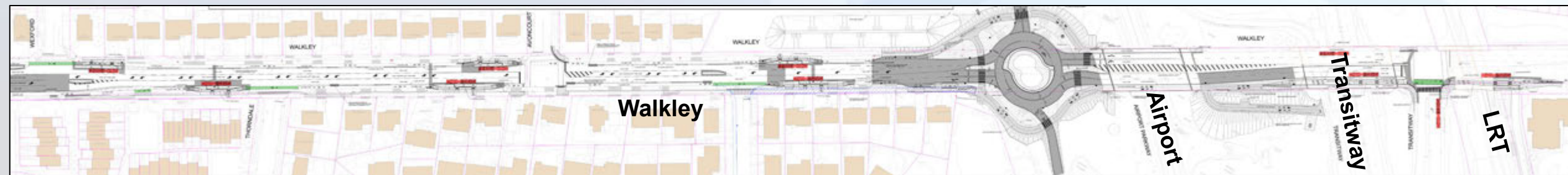
- From East of Southmore Drive to Walkley LRT Station
- Airport Parkway Off-Ramp
- New Roundabout at Walkley Road
- Multi-Use Pathway connecting Walkley Road with Cromwell Drive
- Multi-Use Pathway Connection to Sawmill Creek Pathway



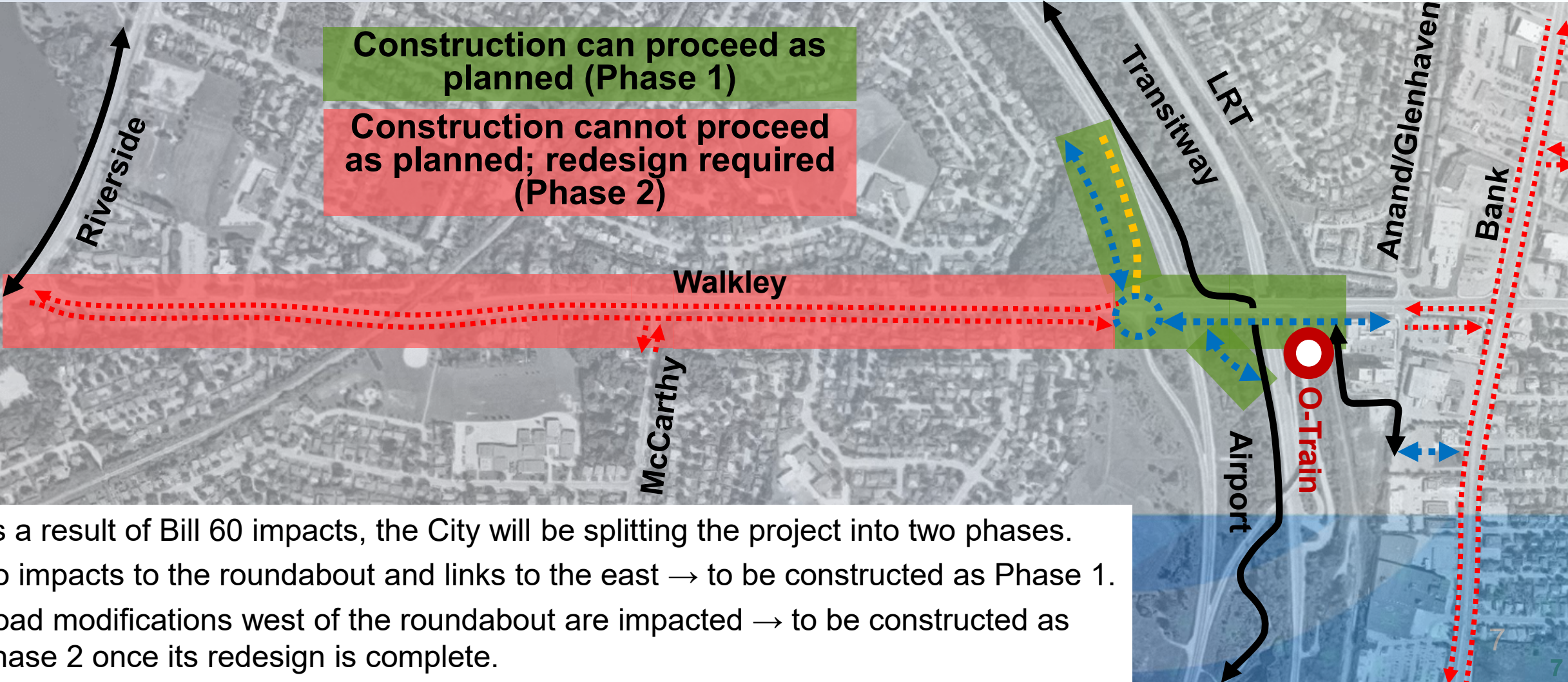
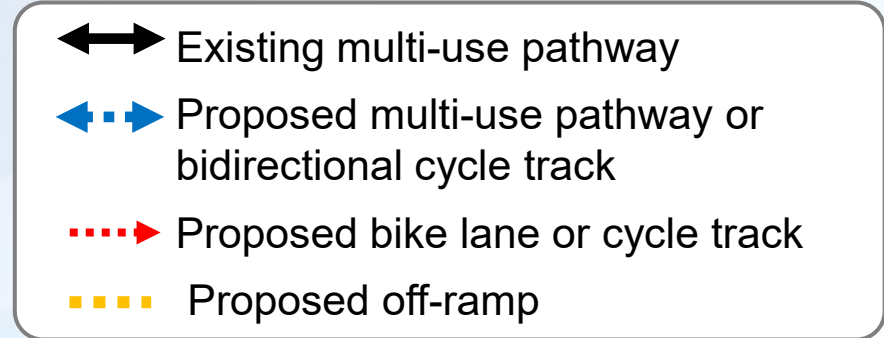
## **2. Project Background & Bill 60 Impacts**

# Project Background & Bill 60 Impacts

The original scope for Walkley Road included road modifications to aid with speed management and add on-street cycling facilities from Riverside Dr to the roundabout.



# Bill 60 Impacts



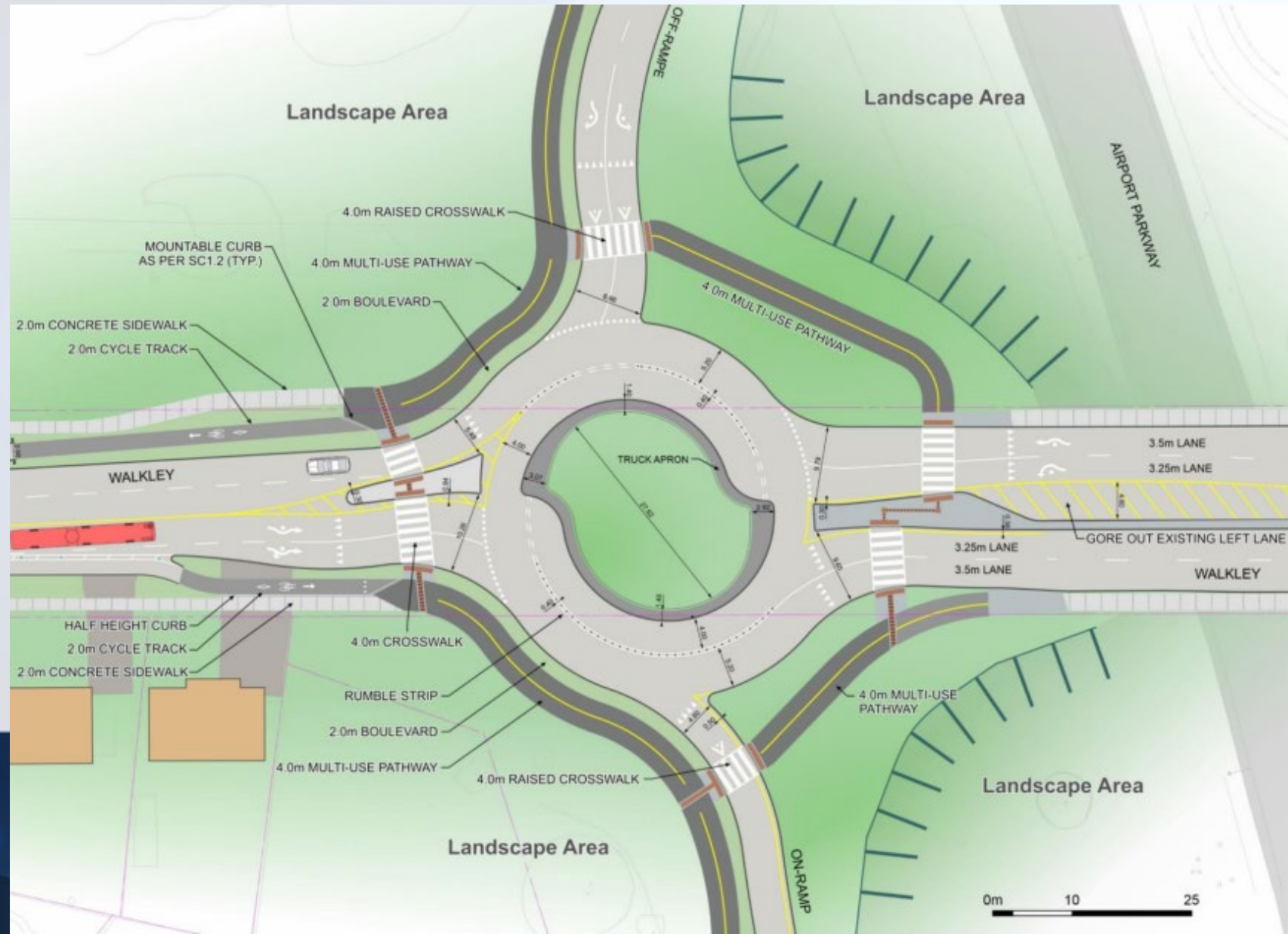
- As a result of Bill 60 impacts, the City will be splitting the project into two phases.
- No impacts to the roundabout and links to the east → to be constructed as Phase 1.
- Road modifications west of the roundabout are impacted → to be constructed as Phase 2 once its redesign is complete.

# **3. Walkley Road Construction Phase 1 Roundabout to O-Train**

# Walkley Road Southbound Off-Ramp and Roundabout

The following are the key design features:

- New southbound off ramp from Airport Parkway
- New roundabout where southbound ramps meet Walkley Road
- Pedestrian crossovers (PXOs) across each leg of roundabout
- PXOs across on and off ramps are raised
- Multi-use pathway (MUP) around perimeter and connecting to Airport Parkway west-side MUP
- Tie-in to west of roundabout “Future Walkley Phase 2”

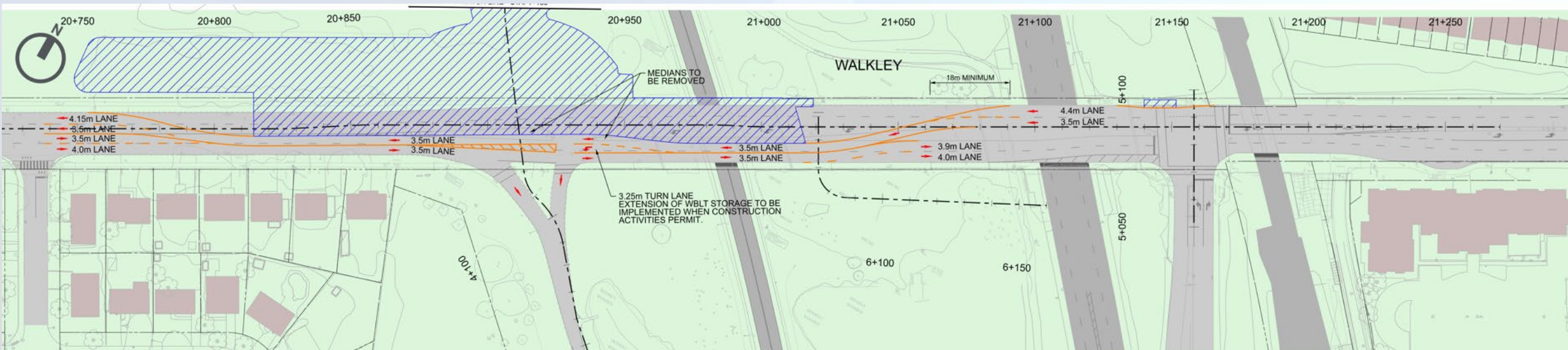


# Construction Staging

- Construction staging divided into 3 main stages
- Coordination with AP & Transitway bridge construction
- Traffic management during construction
- Active Transportation will be maintained throughout all stages

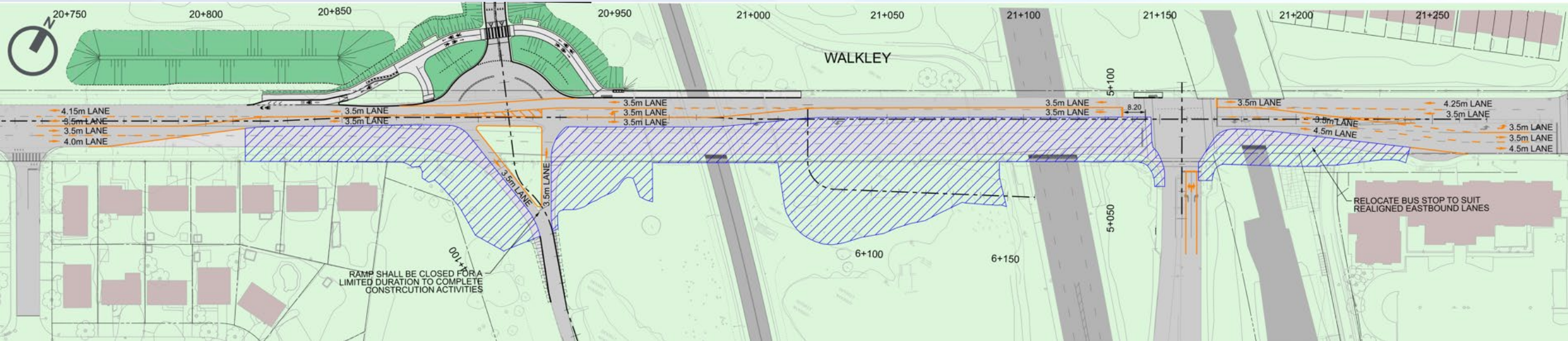
# Construction Staging #1

- Construction of the north side of the roundabout including the north section of Airport Parkway bridge
- One lane of traffic in each direction will be maintained on the south side of Walkley Road



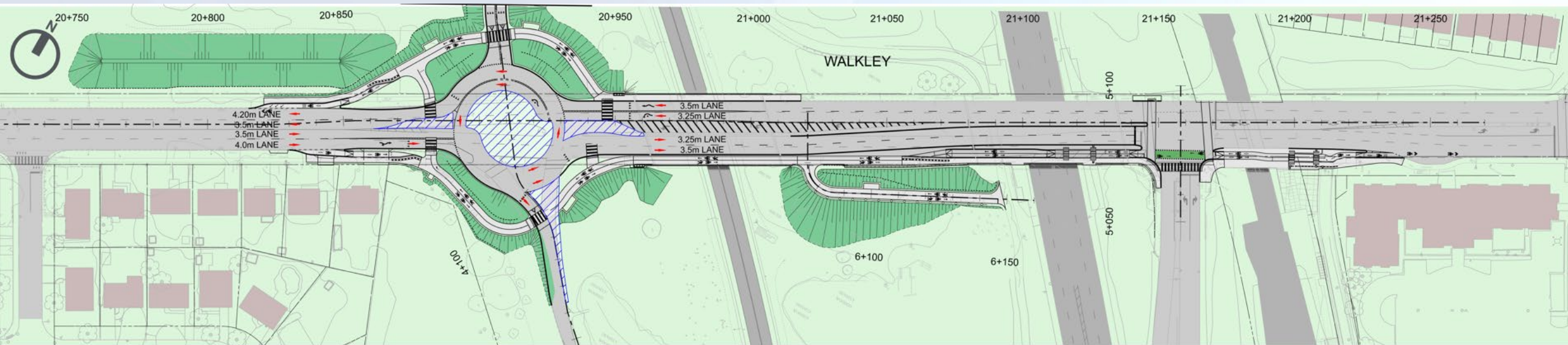
# Construction Staging #2

- Construction of the south side of the roundabout including the south section of Airport Parkway & Transitway bridges
- One lane of traffic in each direction will be maintained on the north side of Walkley Road



# Construction Staging #3

- Construction of the center portion of the roundabout including splitter islands
- Roundabout will be operational and traffic will be maintained similarly to the final configuration of Walkley Road



# Reconstruction of Walkley Road & Airport Parkway Ramps

## Managing Construction Disruption – General Objectives

The construction project activities will have the potential to impact residents, institutions, and businesses and along the streets and in the adjacent community. The project will strive to:

- **Minimize the time and extent of the construction project's potential negative effects** on adjacent businesses, landowners, the surrounding community, and the environment as best possible.
- Place a priority on the need to **retain transportation accessibility to all street fronting land uses**, including pedestrian accessibility to building entrances.
- Provide an **acceptable level of service for emergency service vehicles**.
- Implement a range of **environmental mitigation tools** such as erosion and sediment control plans, contaminated materials management plans, noise and vibration monitoring.
- **Construction hours of work** are typically 7:00 am to 6:00 pm weekdays, however the construction plans for this project not yet confirmed. Provisions for weekend and evening work may be contemplated at critical locations.



# Reconstruction of Walkley Road & Airport Parkway Ramps

## Accessibility During Construction

The Contractor undertaking the construction shall prepare a Construction Site Pedestrian Control Plan which will ensure the provision of a safe and accessible path of travel for all pedestrians through and/or around the construction site. The City will monitor accessibility regularly throughout construction.

Pedestrian travel routes along the streets during construction will be fully accessible and winter maintained.

The designated crossing locations of the streets will accommodate users of all abilities.

Accessible OC Transpo bus stops will be available and Para-Transpo service will be accommodated at all times.

A 2.0 metres minimum pedestrian clearway width will be maintained



# Reconstruction of Walkley Road & Airport Parkway Ramps

## Working with the Community During Construction

The City will be committed to working collaboratively and continuously with affected parties during the construction period.

The City will:

- Notify residents of ongoing and upcoming work via the City's website and construction notices
- Keep lines of communication open between the City, its contractor, area institutions, businesses and residents;
- Make best efforts to schedule construction activities that work around special events; and
- Actively involve community stakeholders in implementing solutions to manage the project's construction period disruption.
- Email distribution of project newsletters to provide regular project updates and associated traffic impacts.



# 6. Next Steps and Timing

# Next Steps

- Construction Start – Phase 1: Late Summer 2026
- Phase 2 Redesign: 2026-2027
- Construction Completion – Phase 1: Late 2027



# 7. Questions & Comments

# Thank You!

## Contacts:

Bin Wang, P.Eng (City of Ottawa Project Manager) [Bin.Wang@Ottawa.ca](mailto:Bin.Wang@Ottawa.ca)

Bader Alnabelseya, P.Eng (Parsons) [Bader.Alnabelseya@parsons.com](mailto:Bader.Alnabelseya@parsons.com)

Chris Redden, P.Eng (Parsons) [Chris.Redden@parsons.com](mailto:Chris.Redden@parsons.com)

## Useful Resources:

- 1- What is a roundabout? <https://ottawa.ca/en/parking-roads-and-travel/traffic-services/roundabouts/what-roundabout>
- 2- Navigating roundabouts [https://documents.ottawa.ca/sites/default/files/documents/con055465\\_FINAL.pdf](https://documents.ottawa.ca/sites/default/files/documents/con055465_FINAL.pdf)
- 3- How to use a roundabout <https://www.youtube.com/watch?v=46mOPz3rhHs>