

Land Use, Development, and Transportation Committee:  
**Transportation, Transit,  
 & Traffic Safety  
 Sub-Committee Report**

Submitted: February 3, 2021  
 Terry Wood, transportation@riversidepark.ca



1

## 2019 Collision Data

- 3 of the top 10 intersections for vehicle collisions are in our general area, with the Hunt Club/Riverside intersection holding on to #1 by a wide margin, and Riverside/Heron ranking #3.

2019 Top 10 Signalized Intersection Collision Locations

Rank*	Location	# of Collisions	Injuries				Total
			Minimal	Minor	Major	Fatal	
1	HUNT CLUB RD @ RIVERSIDE DR	58	5	2	0	0	7
2	CATHERINE ST @ KENT ST	43	2	3	0	0	5
	INNES RD @ TENTH LINE RD	40	3	2	1	0	6
3	RIVERSIDE DR @ HERON RD	40	1	1	1	0	3
5	CARLING AVE @ KIRKWOOD AVE N	39	1	8	0	0	9
6	GREENBANK RD @ IRIS ST/417 EAST	38	8	1	0	0	9
7	RIVERSIDE DR @ TREMBLAY RD/417 EAST	33	7	3	3	0	13
7	ST. LAURENT BLVD @ WALKLEY RD	33	2	8	1	0	11
9	BANK ST @ HUNT CLUB RD	32	2	4	2	0	8
9	BASELINE RD @ WOODROFFE AVE	32	1	4	0	0	5

- The most relevant table for our area is attached, and further info, including data on collisions involving bicycles, motorcycles and pedestrians, can be obtained at <https://ottawa.ca/en/parking-roads-and-travel/road-safety/annual-safety-reports>.

**RIVERSIDE PARK COMMUNITY ASSOCIATION** INFO@RIVERSIDEPARK.ca  /RIVERSIDEPARKCA

RPCA c/o HUNT CLUB-RIVERSIDE PARK COMMUNITY CENTRE, 3320 PAUL ANKA DR, OTTAWA ON K1V 0J9

2

# Hydro Corridor "Reconductoring"

- Hydro One has applied to the Ontario Energy Board to "reconductor" the large twin trunk transmission line in the hydro corridor adjacent to the RR.
- The work involves the 12 km portion of the transmission lines between the Hawthorne and Merivale Transformer Stations.
- Capacity of the transmission lines is to be doubled, from approximately 648 MW to 1,080 MW. Increase is significant – about the same megawattage (MW) as produced by a single CANDU7 nuclear power reactor.
- City approval is also required for one new easement over municipally-owned property.
- **Health and safety considerations are not part of the OEB regulatory approval process** (see next slide), but the work is subject to the **2016 Class Environmental Assessment for Minor Transmission Facilities**, which addresses a wide range of health, safety and environmental concerns.



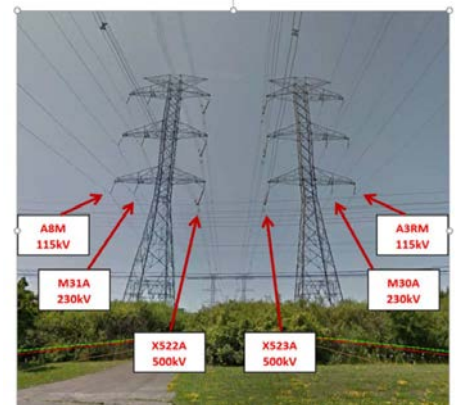
**RIVERSIDE PARK COMMUNITY ASSOCIATION** [INFO@RIVERSIDEPARK.ca](mailto:INFO@RIVERSIDEPARK.ca) [/RIVERSIDEPARKCA](https://www.facebook.com/RIVERSIDEPARKCA)  
 RPCA c/o HUNT CLUB-RIVERSIDE PARK COMMUNITY CENTRE, 3320 PAUL ANKA DR, OTTAWA ON K1V 0J9

3

# Hydro Corridor "Reconductoring" Health, Safety & Environmental Considerations

- Large power transmission lines can create significant electromagnetic fields (EMFs) that can extend out to about 300 meters. EMF is strongest directly underneath the lines, and gradually fades away with increasing distance.
- Distance from the centre of the twin transmission lines to Southmore East property lines is just under 50 meters. Others living adjacent to the corridor might be affected.
- Health implications of EMF radiation are controversial; EMF is often cited as causing a variety of health problems, including cancer.
- Hydro One has provided assurances that the "reconductoring" meets all applicable health and safety standards – notably, "that the electric and magnetic fields along the transmission corridor would not substantially change".
- The actual work involved should not be too disruptive, according to Hydro One.

Figure 3 – Photograph Illustrating the Two Adjacent Towers That Each Support 115 kV, 230 kV and 500 kV Circuit Between Hawthorne TS and Merivale TS



**RIVERSIDE PARK COMMUNITY ASSOCIATION** [INFO@RIVERSIDEPARK.ca](mailto:INFO@RIVERSIDEPARK.ca) [/RIVERSIDEPARKCA](https://www.facebook.com/RIVERSIDEPARKCA)  
 RPCA c/o HUNT CLUB-RIVERSIDE PARK COMMUNITY CENTRE, 3320 PAUL ANKA DR, OTTAWA ON K1V 0J9

4

## Hydro Corridor "Reconductoring" Submission Process

- Deadline for submissions was **January 19**, but OEB remains open to receiving comments.
- Hydro One OEB application and related documents:  
<https://www.oeb.ca/participate/applications/current-major-applications/eb-2020-0265>
- 2016 Class Environmental Assessment for Minor Transmission Facilities:  
[https://www.hydroone.com/abouthydroone/CorporateInformation/majorprojects/classenvironmentalassessmentforminortransmissionfacilities/Documents/Class%20EA%20for%20Minor%20Transmission%20Facilities\\_Nov16%202016.pdf](https://www.hydroone.com/abouthydroone/CorporateInformation/majorprojects/classenvironmentalassessmentforminortransmissionfacilities/Documents/Class%20EA%20for%20Minor%20Transmission%20Facilities_Nov16%202016.pdf)



**RIVERSIDE PARK COMMUNITY ASSOCIATION** | [INFO@RIVERSIDEPARK.ca](mailto:INFO@RIVERSIDEPARK.ca) | [/RIVERSIDEPARKCA](https://www.facebook.com/RIVERSIDEPARKCA)

RPCA c/o HUNT CLUB-RIVERSIDE PARK COMMUNITY CENTRE, 3320 PAUL ANKA DR, OTTAWA ON K1V 0J9