



# Presentation to Riverside Park Community Association

Rail Construction Program

April 7, 2021

1

## Introductions

- **Michael Brossoit** – Stakeholder Relations, South Extension – City of Ottawa
- **Amanda Thompson** – Program Manager, Stakeholder Relations and Communications – City of Ottawa
- **Theo Tetley** – Project Manager, Stage 2 Construction – City of Ottawa

2

2

# Greenboro Station

- Greenboro Station is a transfer station on the existing Trillium Line.
- The platform will be extended and will be designed and constructed with all related shelters and other requirements.

31

31



View of Greenboro Station, looking north over the Transitway

32

32

## Greenboro Station: Progress

### Completed:

- Sand blasting and coating of existing platform.
- Poured a portion of foundation footing.

### Ongoing:

- Foundation work.

### Upcoming:

- Foundation footing for platform extension
- Lightweight fill up to the topping slab for new platform.

33

33

## Greenboro Station: Impacts

- Noise from increased truck traffic.

34

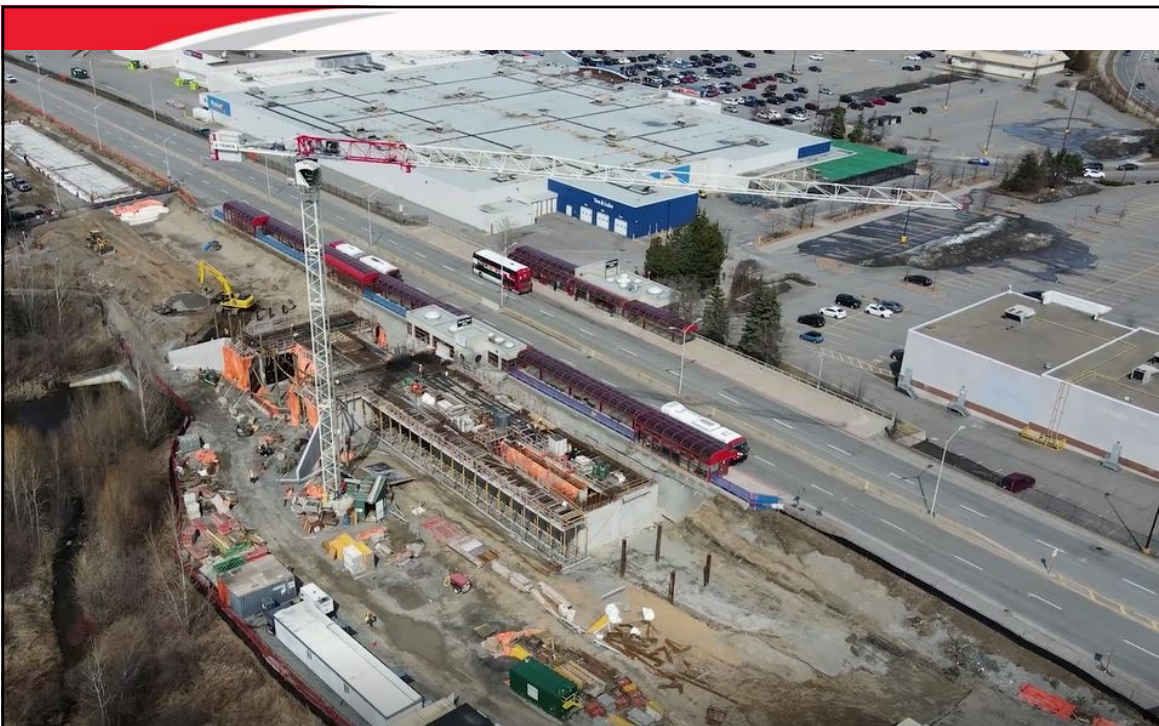
34

# South Keys Station

- South Keys Station is an existing Transitway station located adjacent to the South Keys Shopping Centre, which will be expanded to serve as a transfer station between the Airport Link and Trillium Line.
- Will be a centre-platform station; one platform in the middle, serving both directions.

35

35



A view of South Keys Station looking northeast over the Transitway

36

36



# South Keys Station: Progress

## Completed:

- Foundation work is complete.
- Temporary relocation of utilities.
- Water proofing of walls on north side of station

## Ongoing:

- Forming and reinforcement for the walls supporting the platform.
- Formwork for the concrete roof slabs.
- Engineered fill has been installed north of the MUP. The placement of concrete distribution slabs has started on top of the lightweight fill.
- Excavation for lightweight fill is taking place between the station and the MUP.
- Concreting of interior walls.

37

37

# South Keys Station: Progress (cont'd)

## Upcoming:

- Foundation footing for platform extension
- Lightweight fill up to the topping slab for new platform.

38

38

## South Keys Station: Impacts

- Noise due to increased truck traffic.

39

39

## Guideway Work

### **Greenboro to Hunt Club:**

- Excavation and embankment work is nearing completion, pending utility relocations.
- Excavation for lightweight fill ongoing.
- Concreting of distribution slabs ongoing.

### **Hunt Club to Leitrim:**

- Cable trough installation continues.
- Cahill drain realignment is ongoing.

40

40

## Hunt Club Rail Bridge & Multi-Use Pathway (MUP)

- The Hunt Club Rail Bridge is a Rail-Over-Road bridge located on Hunt Club road, just east of the Airport Parkway bridge over Hunt Club Road.
- The new bridge will include a MUP on the east side of the rail line, continuing down the alignment to Bowesville Station.
- This MUP will effectively connect the Sawmill Creek Pathway System to South Ottawa.

41

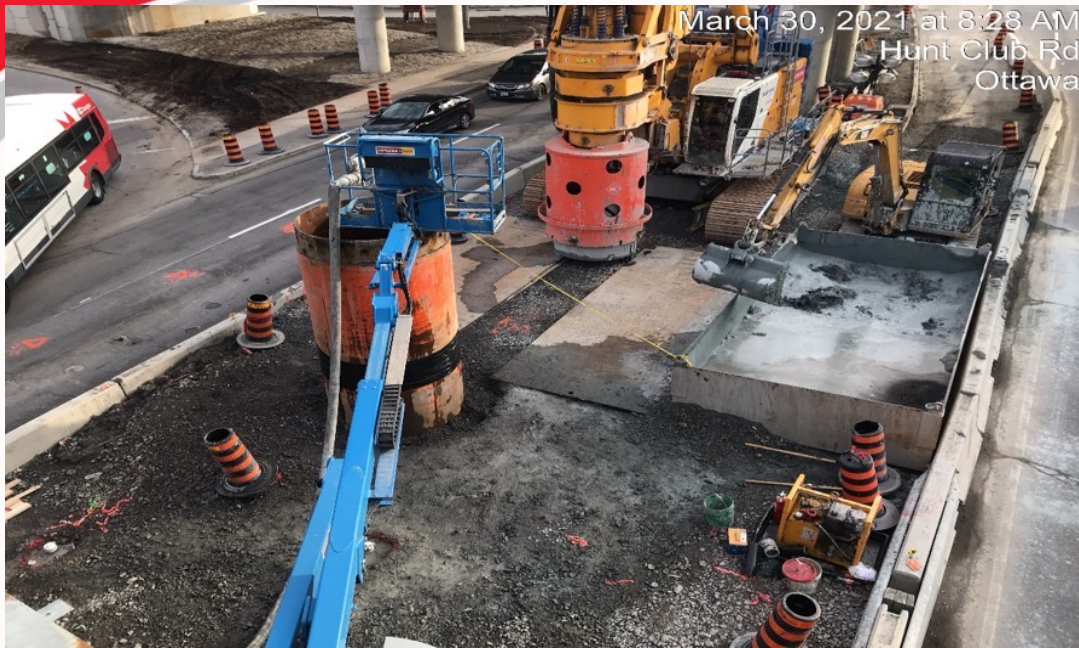
41



View of the work site of the Hunt Club Rail Bridge, looking north

42

42



View of the work site in the median of Hunt Club Road east of the Airport Parkway

43

43

## Hunt Club Rail Bridge & MUP: Progress

### Completed:

- Caisson drilling and pouring in the median.
- Drilling equipment for caisson work to demobilize from the median.

### Ongoing:

- Prep work for next stages of work

### Upcoming:

- Columns, pier caps, girders, bridge deck installations coming throughout the year.

44

44



# Hunt Club Rail Bridge & MUP: Impacts

- Traffic: caisson drilling caused overnight lane closures on Hunt Club Road throughout the work, including the on / off ramps on the Airport Parkway. Traffic impacts are expected to be lessened as the project progresses.
- Noise and Vibration: caisson drilling causes vibration and noise levels that can be disruptive to nearby residents. With the drilling complete, noise and vibration levels at this site are expected to be lessened.