





Hunt Club and Riverside Park Backyard Invasives Project

ANTH/SOCI 2180A Fall 2025

Students: Asmaa Alsalman, Donya Ahmadzai, Harbeen Hunjan, Heather Veldman, Juliette Hardy, Marco Valentin, Margo Le Sann, Michael Igwenagu, Sarah VanDen Akerboom

CA Reps: Christine Johnson, Dave Coyle, Marianne Ariganello, Noëlla Bussières Butler

The presentation opened with brief introductions as participants gathered and settled in.

Representatives from multiple community associations were present, including Christine, Noella, and Marianne and Dave, who joined via Zoom.

The project team consists of:

- Michael,
- Sarah,
- Asmaa,
- Marco,
- Donya,
- Harbeen,
- Heather,
- Juliette and
- Margo

who worked together on the Hunt Club Riverside Park invasive species awareness initiative.

CA & Neighbourhood Introduction

Marco Valentin & Michael Igwenagu

Located about north of the airport and east of the Rideau River in south-Ottawa, **Hunt Club & Riverside Park** are largely peaceful suburban communities.

Both feature lots of green areas, parks, wetlands, and have river access. They are primarily residential; consisting of a mix of single-family homes, townhouses, flats, and some condominiums.

CA Reps: Christine Johnson, Dave Coyle, Marianne Ariganello, Noëlla Bussières Butler



Hunt Club Community



Marco and Michael began by describing the project's geographic context — the north side of the airport extending toward Riverside Park, a predominantly residential area characterized by green spaces, wetlands, and river access.

Campaign Goal:

Harbeen Hunjan

Our mission is to **raise awareness** of local invasive plant species at various community levels, by providing **accessible informational and educational tools** as well as **community-focused activities**. Through projects that engage classrooms, broader community members, and city representatives, we aim to **empower the communities** with the knowledge to responsibly **remove** these species and opportunities to **replace** them with native plants in order that local ecosystems may be strengthened and restored.

The goal of the initiative was to raise awareness about local and invasive plant species by providing accessible information, educational tools, and community-focused activities.

Through classroom engagement, community involvement, and collaboration with city representatives, the team hoped to empower residents with the knowledge and resources needed to remove invasive species and replace them with native alternatives, helping restore local ecosystems.

UNWANTED! Invasive Plants in Our Community

Invasive plants harm native growth and disturb wildlife by taking over natural habitats. Here are three common invasive species that are found in your community.



Dog-strangling Vine

How to Identify

- Pointed oval shape leaves
- Pinkish star shaped flowers
- Produces white feather seeds in fall

Why it's Harmful

- Prevents forest regeneration by wrapping around and strangling native plants



Buckthorn

How to Identify

- Dark green pointed leaves positioned sub alternately on the stem
- Produces small dark berries in the fall

Why it's Harmful

- Harms small birds
- Disturbs native plant growth by crowding out



Burdock

How to Identify

- Large, long heart shape leaves
- Produces purple flowers with sticky burrs in the fall

Why it's Harmful

- Crowds out native plants
- Burrs accelerate the spread of seeds

Coming soon ... A contest in our community to identify and remove invasive species and replace them with native plants ... PRIZES FOR EVERYONE!
Watch for an ad on our community association websites (<https://huntclub.ca/> & <https://riversidepark.ca/>)

Invasive Species Poster

Donya Ahmadzai

This Informational poster helps the community identify three common invasive species and understand the harm they cause.

The poster is designed for local residents to raise awareness and encourage the replacement of invasive plants with native alternatives.

Donya presented a poster designed to help residents identify common invasive plants and understand the ecological harm they cause.

The poster is intended to spark conversation and encourage homeowners to replace invasive species with native plants.

The group noted that the poster will be available on the community association's website.

Contest Promotional Material

Juliette Hardy



Physical Poster



Instagram Format



Facebook Format



Juliette outlined the invasive species identification contest designed to motivate residents to learn about invasive plants and participate in their removal.

Participants can submit photos of identified species and receive native seed packets as prizes.

Those who remove invasives and provide before-and-after photos can earn seedlings as additional rewards.

The promotional materials for this initiative include physical posters and social media graphics, all featuring QR codes linking to resources and contest information.

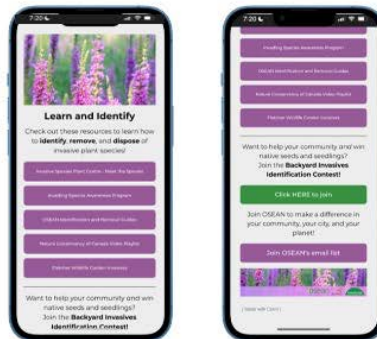
The project was developed in collaboration with the Ottawa South Eco-Action Network, which has agreed to provide native seeds as prizes.

Contest Submission Form & Webpage

Margo Le Sann



<https://biosean.carrd.co/>

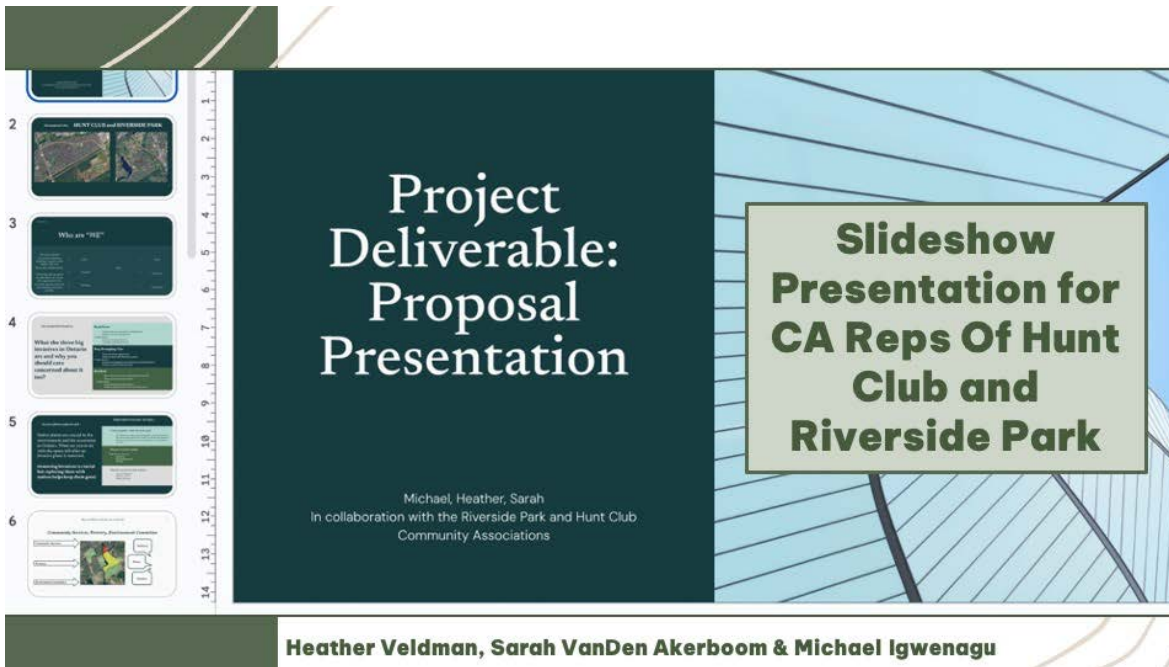


Webpage mobile view

Margo demonstrated a simple website they created to house resources, videos, educational materials, and links to the contest's Google Form.

The form includes rules, visual identification prompts, space to upload photos, and questions about garden conditions so that seed prizes can be tailored appropriately.

There is also a volunteer sign-up section to help ensure ongoing community engagement.



The presentation then shifted to the group’s final deliverable: a slideshow framework intended for community association representatives to use when presenting the project to various committees and stakeholders.

Heather, Sarah and Michael explained that they deliberately designed the slide deck as a flexible “skeleton” that reps can adapt to suit different audiences—whether political bodies, environmental committees, or neighborhood groups.

Heather Veldman, Sarah VanDen Akerboom & Michael Igwenagu

Slideshow *skeleton*

Heather Veldman, Sarah VanDen Akerboom & Michael Igwenagu

Our group has created a slideshow presentation with the goal of it being used in a number of proposals as our CA Reps work towards our final project goal.

This presentation is created with the intention of being **modified** as needed in order to make sure it **fits the audience** it is being presented to, as close to perfect as possible.

Each and every committee has a different POV they will want to prioritize in the execution of this project.

In working with our **CA Reps** we have been able to construct this slideshow **in hopes of them adding their expertise with their knowledge who is sitting in to hear OUR presentation.**

The slideshow connects invasive species to **broader social issues**, including the **loss of green space** in communities where residents may not have the time or resources to manage invasives on their own.

The students emphasized that invasive plant removal intersects with

- **equity,**
- **development pressures, and**
- **long-term community planning.**

The deck includes multiple versions of key messages so that presenters can choose the tone and level of detail most appropriate for the audience.

1 Project Deliverable: Proposal Presentation

2 Our proposal is for: HUNT CLUB and RIVERSIDE PARK

3 Who are "WE"

4 What the three big invasives in Ontario are and why you should care concerned about it too?

5 Invasive plants replaced with... Native plants are crucial to the environment and the ecosystem in Ontario. What are you to do with the space left after an invasive plant is removed. (removing invasives is crucial but replacing them with natives helps keep them gone)

6 Why are we here and what are we here for? Community Services, Forestry, Environment Committee

7 Hunt club And Riverside Neighbourhoods

8 Request overview

9 What is our overall goal?

Heather Veldman, Sarah VanDen Akerboom & Michael

The team acknowledged that the project is long-term and evolving, and that goals will shift over time. The final slides include maps, additional information provided by community association experts, and a concluding "thank you" accompanied by native plant recommendations.

One of the community association members noted that the collaboration involved two associations, which sometimes caused confusion, but praised the students for their strong work and significant contributions.

10 Why would this be valuable?

- Community Engagement
- River Ward 16 Councilor
- Backburners
- Riverside Park
- Hunt Club

11 Inform

- These neighborhoods have the highest youth population
- And lowest car ownership
- And still have the lowest of:
 - Homelessness
 - Affordability
 - Tax/impacts of price index

Educate

- Areas that are in the lower income quartile are subject to the political impacts of the invasive species
- They will be the prime target for customer change in the environment

12 Motivation to eliminate

- The community has
 - High Mobility and Demolition
 - Invasives in their parks, woodlots
 - Low tree canopy 25% of goal
 - Food security
 - Low net worth
 - Needs to engage youth
 - Needs for one of high school skills

13 REVENUE MODEL

Existing Acres

Why

14 Thank you

Other members echoed this praise, highlighting how helpful the materials—especially the slide deck—will be citywide.

Heather Veldman, Sarah VanDen Akerboom & Michael Igwenagu



Thank you for listening!

The presentation concluded with acknowledgments, final introductions, and appreciation for the students' dedication and learning throughout the project.

Do you have any questions?